


How to Adjust Object Counting Parameter?

The document can be applied to DivioTec cameras including NBR123P, NDR153P, NBR125C, NBR125P, NDR154P, NDR554P, and NBR525P.

Object Detection



Configurations

Enable : ON Object Schedule

Detect mode :

Direction :

Count : Right:0 Left:0

Count Reset

Setup Detection Area

Minimum Width :

Minimum Height :

Maximum Width :

Maximum Height :

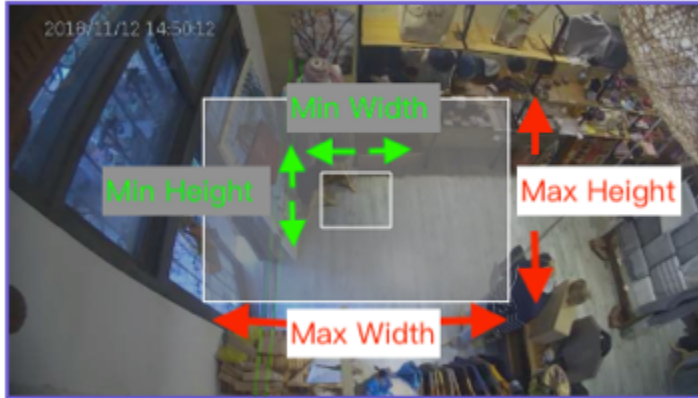
Sensitivity : (0~255)

Background Weight : (1~255)

Object Size:

Adjust the maximum and minimum of width and height of object.
If the object size is bigger than the maximum area, it counts as 2. If the object size is smaller than the minimum area, it will not be counted.

Object Detection



Configurations

Enable : ON Object Schedule

Detect mode : Object-Counting

Direction : Two way

Count : Right:8 Left:8

Count Reset

Setup Detection Area

Minimum Width :

Minimum Height :

Maximum Width :

Maximum Height :

Sensitivity & Background Weight:

Sensitivity :	<input type="text" value="6"/>	(0~255)
Background Weight :	<input type="text" value="32"/>	(1~255)

Sensitivity:

An increase in the value of this parameter makes the sensitivity decrease
(For example: Decrease Sensitivity to count more pedestrians and increase to count less.)

Background Weight:

An increase in the value of this parameter classifies the the static scene as the background faster.
(For example: Decrease Background Weight to count more pedestrians and increase to count less.)

Push Count Message:

- HTTP host address
e.g. 192.168.0.100:5000/json
- Push Type. *(refer to the table1 below.)*
- Data type. *(refer to the table1 below.)*

Push Count Message

Enable : ON

Host Address :

Push Type : Event ▼

Sum : ON

	Period	Event	
Push Type	Push per 1 minute	Push when trigger	Push when trigger
Data Type	Sum in 1 minute	Push(sum)	Push(trigger)

table1